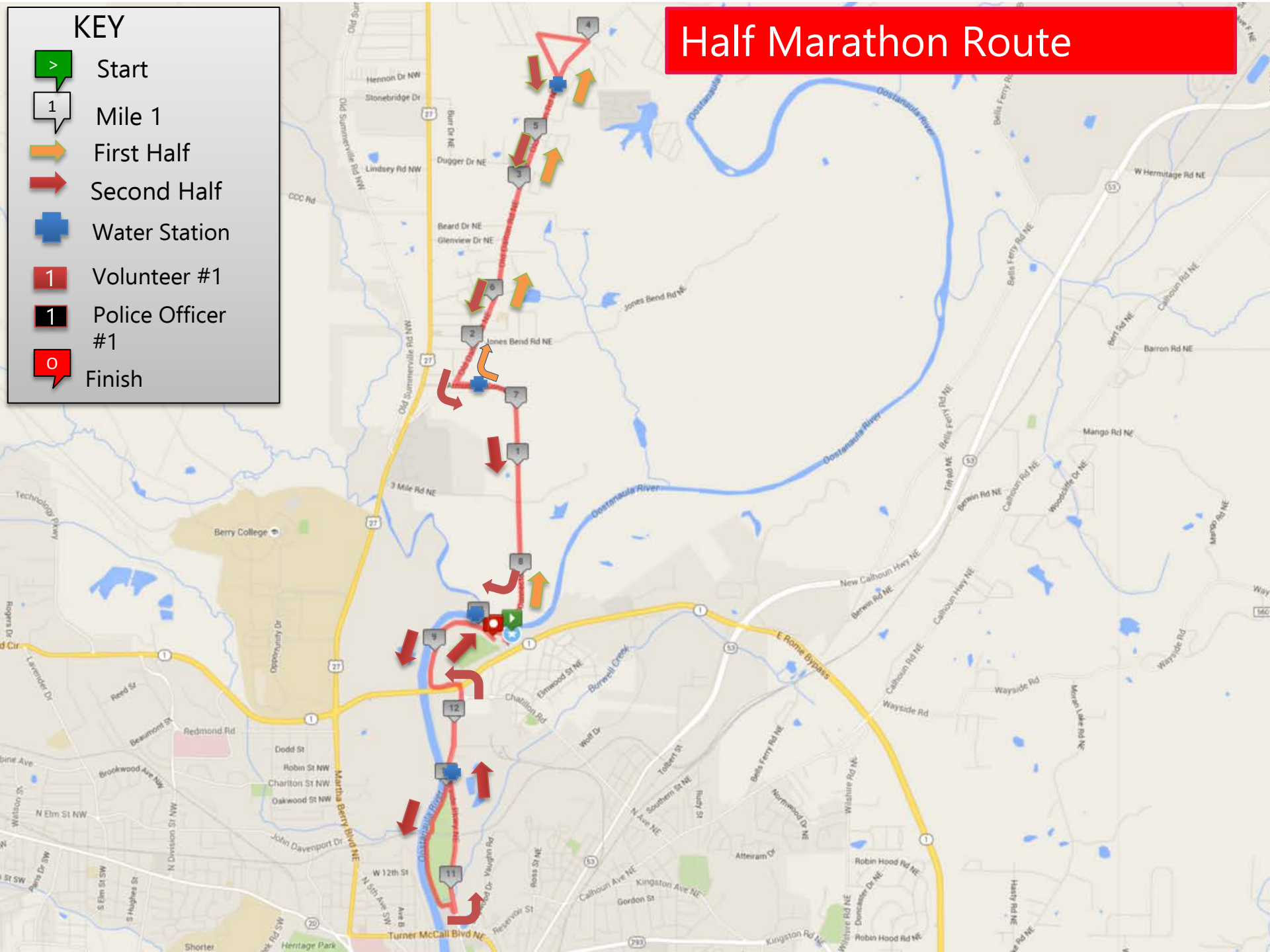
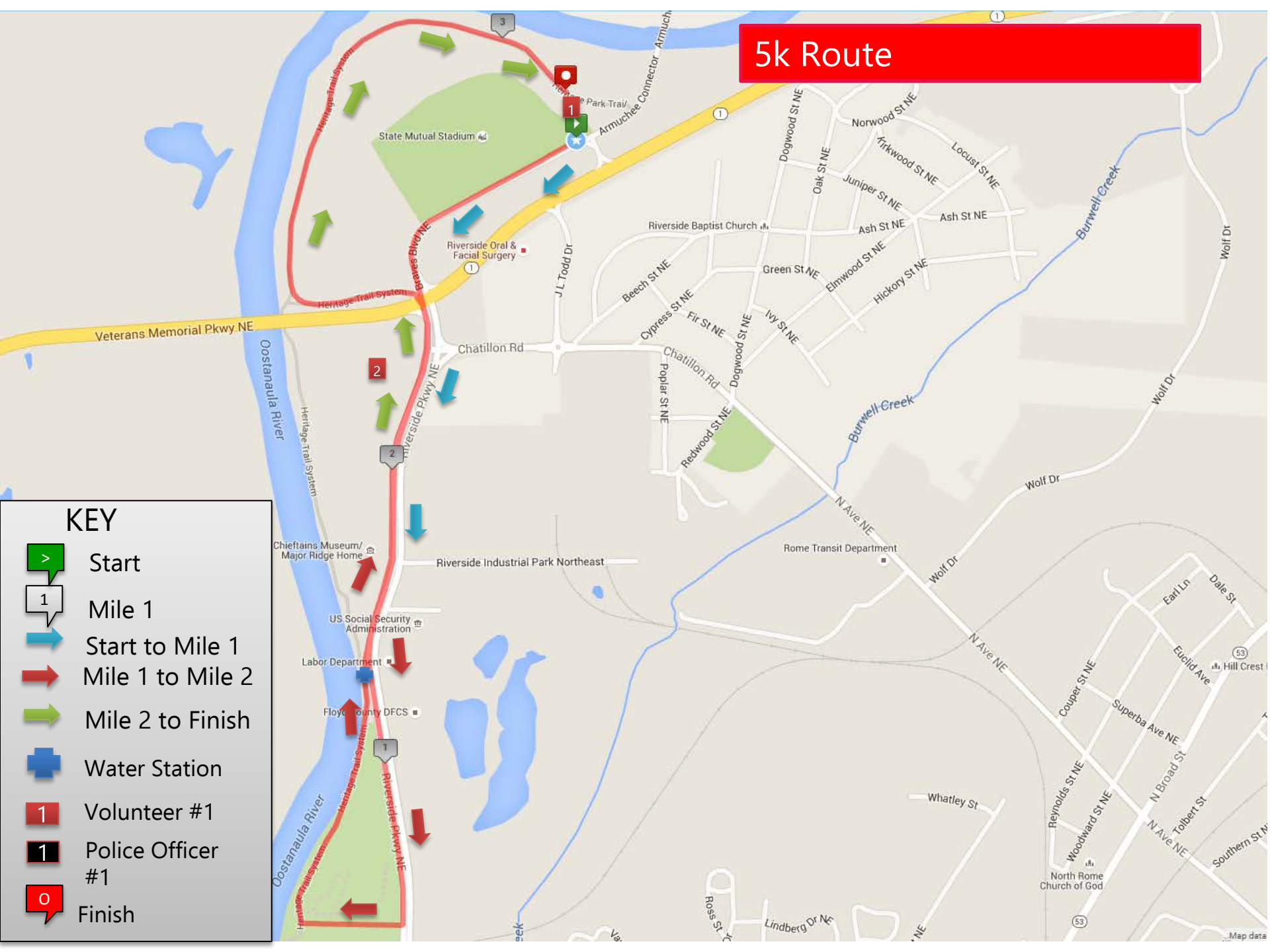


# Half Marathon Route










- KEY**
-  Start
  -  Mile 1
  -  First Half
  -  Second Half
  -  Water Station
  -  Volunteer #1
  -  Police Officer #1
  -  Finish



# 5k Route












## KEY

-  Start
-  Mile 1
-  Start to Mile 1
-  Mile 1 to Mile 2
-  Mile 2 to Finish
-  Water Station
-  Volunteer #1
-  Police Officer #1
-  Finish

# 5k Volunteer Locations

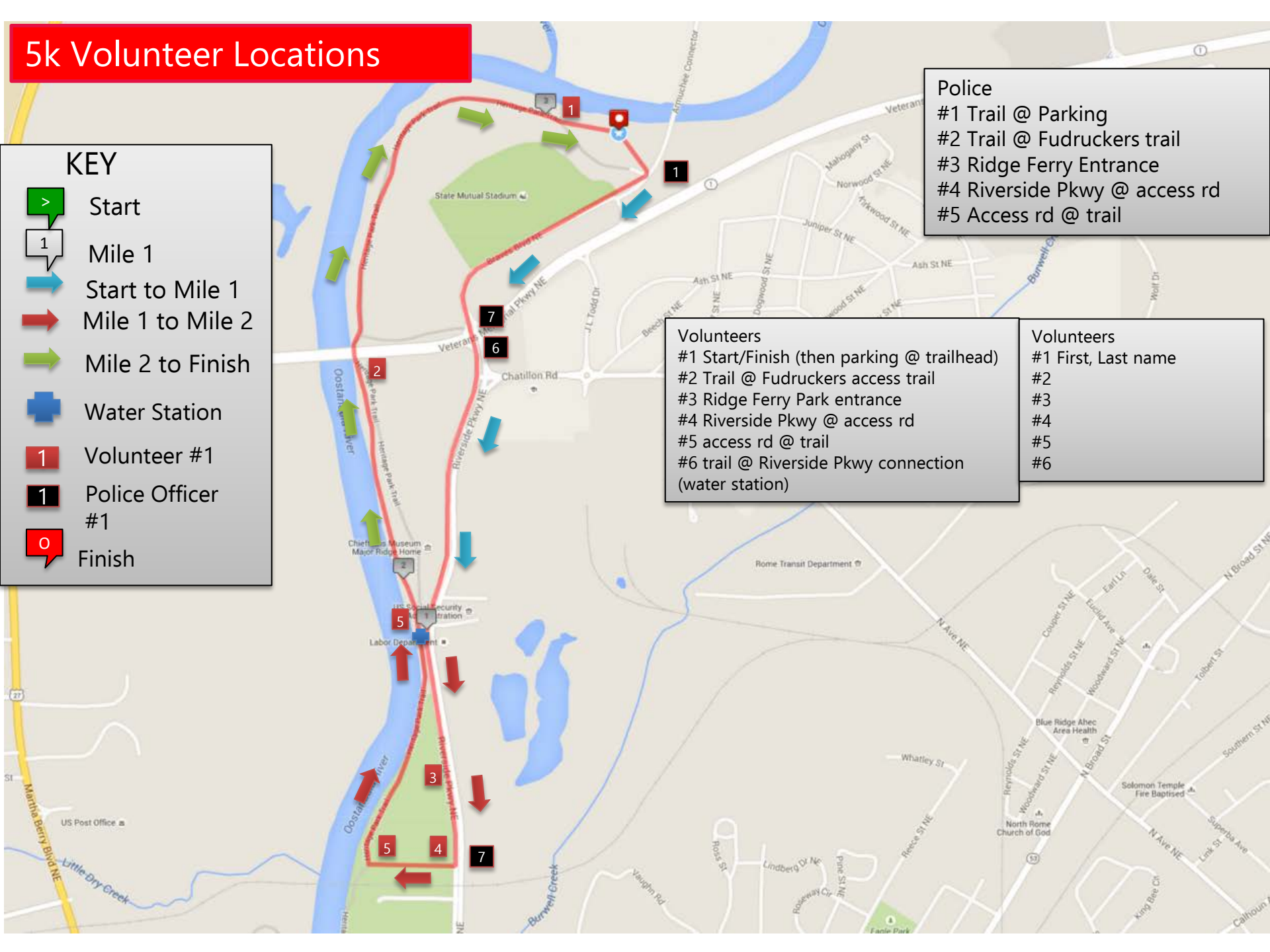
## KEY

-  Start
-  Mile 1
-  Start to Mile 1
-  Mile 1 to Mile 2
-  Mile 2 to Finish
-  Water Station
-  Volunteer #1
-  Police Officer #1
-  Finish

- Police**
- #1 Trail @ Parking
  - #2 Trail @ Fudruckers trail
  - #3 Ridge Ferry Entrance
  - #4 Riverside Pkwy @ access rd
  - #5 Access rd @ trail

- Volunteers**
- #1 Start/Finish (then parking @ trailhead)
  - #2 Trail @ Fudruckers access trail
  - #3 Ridge Ferry Park entrance
  - #4 Riverside Pkwy @ access rd
  - #5 access rd @ trail
  - #6 trail @ Riverside Pkwy connection (water station)

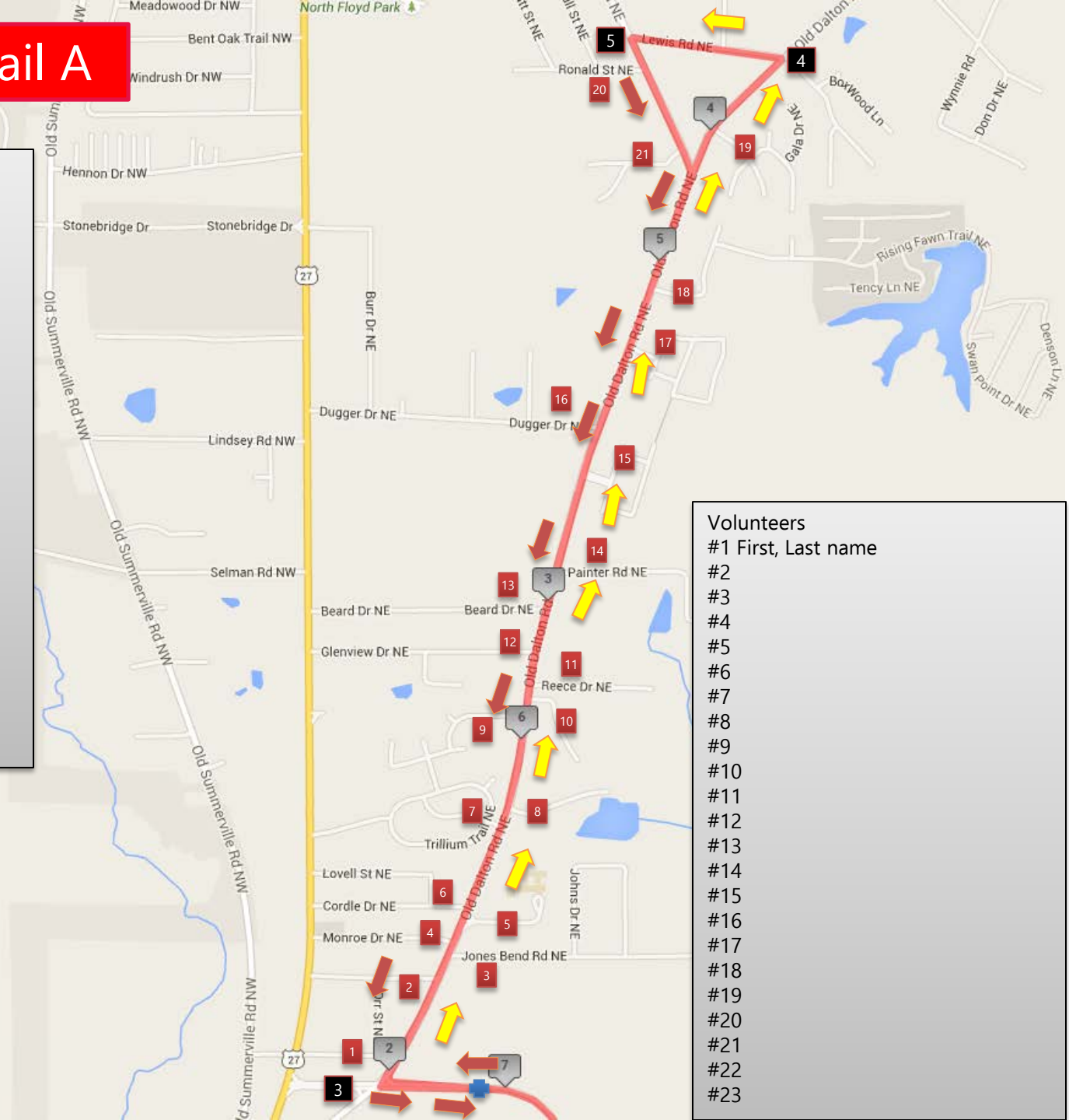
- Volunteers**
- #1 First, Last name
  - #2
  - #3
  - #4
  - #5
  - #6





# Half Course Detail A

- Volunteers**
- #1 Old Dalton @ Old Schol Rd
  - #2 Old Dalton @ Mark St
  - #3 Old Dalton @ Jones Bend
  - #4 Old Dalton @ Monroe
  - #5 Old Dalton @ Glenwood School
  - #6 Old Dalton @ Cordle
  - #7 Old Dalton @ Redfern Trail
  - #8 Old Dalton @ Glen Lake
  - #9 Old Dalton @ Honeytree
  - #10 Old Dalton @ Sessler
  - #11 Old Dalton @ Reece
  - #12 Old Dalton @ Glenview
  - #13 Old Dalton @ Beard
  - #14 Old Dalton @ Painter
  - #15 Old Dalton @ Emerald Oaks Way
  - #16 Old Dalton @ Dugger
  - #17 Old Dalton @ Emerald Oaks Dr
  - #18 Old Dalton @ Sylvan
  - #19 Old Dalton @ Applewood
  - #20 Old Dalton @ Lewis
  - #21 Warren @ Lewis
  - #22 Warren @ Ronald
  - #23 Warren @ Gurley



- Volunteers**
- #1 First, Last name
- #2
  - #3
  - #4
  - #5
  - #6
  - #7
  - #8
  - #9
  - #10
  - #11
  - #12
  - #13
  - #14
  - #15
  - #16
  - #17
  - #18
  - #19
  - #20
  - #21
  - #22
  - #23

# Half Course Detail B

Volunteers	Volunteers
#22 Parking @ Trail	#22 First, Last name
#23 Trail @ Fudruckers access trail	#23
#24 Trail @ Riverside Pkwy Connection	#24
#25 Trail @ water plant access rd	#25
#26 Trail @ Riverwalk Plaza Parking	#26
#27 Riverwalk Parking @ Riverside Pkwy	#27
#28 Ridge Ferry Park entrance	#28
#29 Riverside Pkwy @ access rd	#29
#30 Ridge Ferry Park entrance #2	#30

